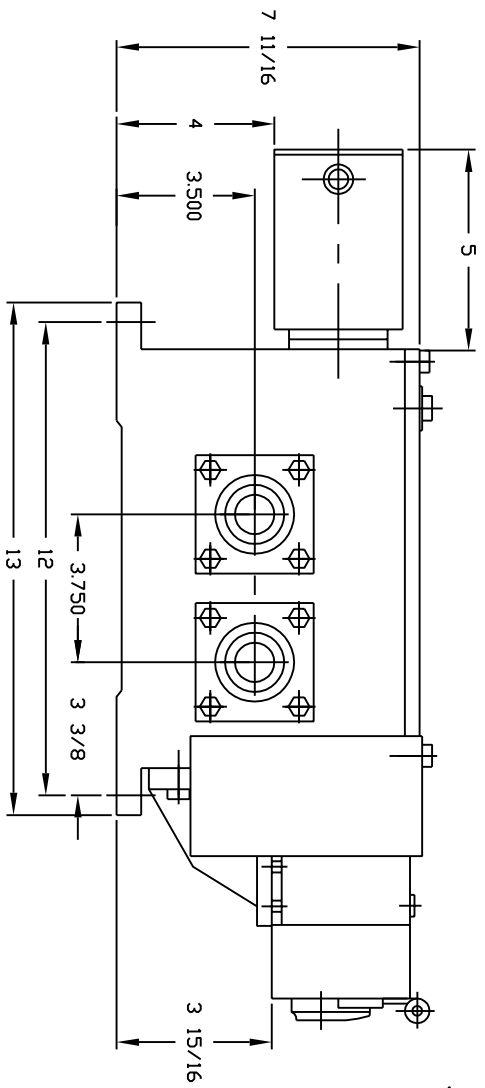
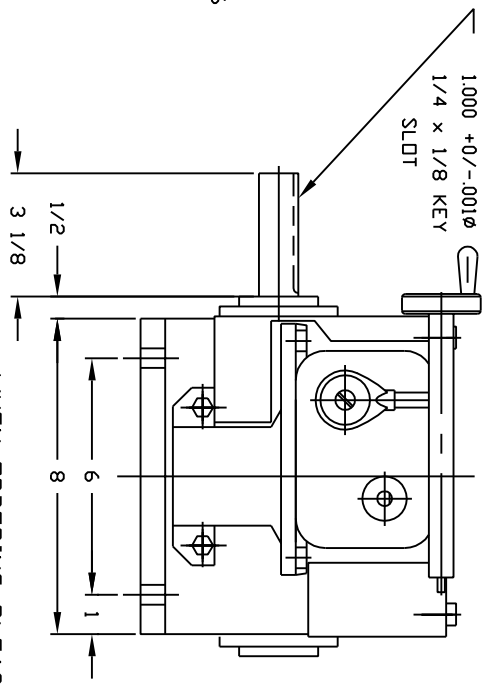


VARIABLE SPEED EFFECT ON OUTPUT SHAFT  
 MAX. -100% OF INPUT  
 MIN. -96.25% OF INPUT  
 OVERALL RANGE 3.75%  
 ( FOR OTHER VARIABLE SPEED EFFECT ON OUTPUT SHAFT CONSULT E.M.P. )



JK-42	JK-41	JK-42	JK-41
OPPOSITE	OPPOSITE	SAME DIRECTION	SAME DIRECTION



NOTES:  
 -Max. input 333 rpm  
 -Oil capacity: 2 1/2 QTS. Mobil Gear# 629  
 -Weight : 65 Pounds

WHEN ORDERING PLEASE SPECIFY:  
 1. SAME OR OPPOSITE ROTATION  
 2. SHAFT POSITION REQUIRED  
 3. INPUT SHAFT ROTATION

E.M.P.		SCALE:	TITLE: IN-LINE DIFFERENTIAL DDT-2 (1-CW)	REV:
TOL EXCEPT AS NOTED		CAD#	REF. DWG.: C-1265 - TRANSMISSION GEAR RATIO	DRAWN: D.K.
+/- .005	+/- 1/64	+/- 1/2	DATE: 2/12/07	APR:
			MAT'L:	DR# D-399A